



Standards of Emergency Care Uganda 2022



Mary Ellen Lyon, MD DTM&H
Educator, Seed Global Health
Makerere University
mlyon@seedglobalhealth.org





Standards of Emergency Care

- Why Emergency Medicine?
- What we do
- How to: Resuscitation Bay
- Relationships within and without
- Protocols



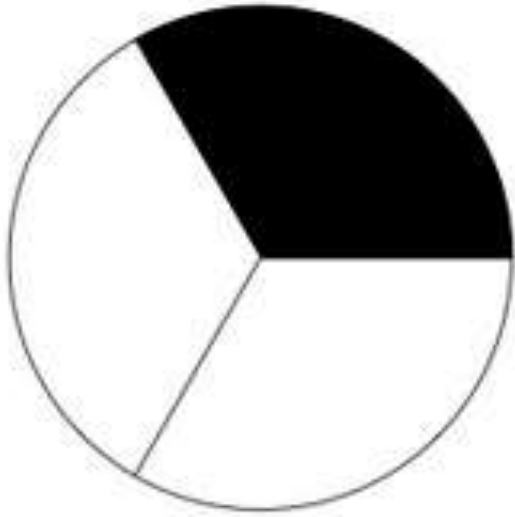


THE REPUBLIC OF UGANDA
MINISTRY OF HEALTH

MINISTRY OF HEALTH

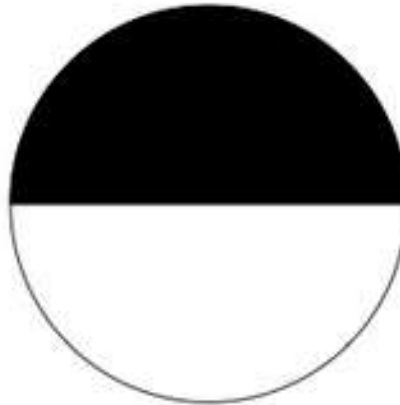
Department of Emergency Medical Services

**NATIONAL
EMERGENCY DEPARTMENT
DESIGN STANDARDS**



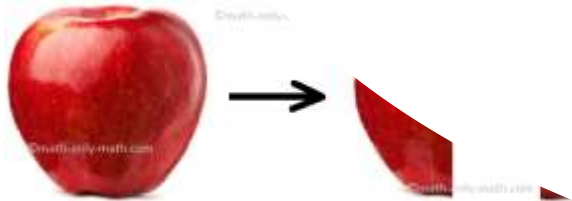
Emergency Care

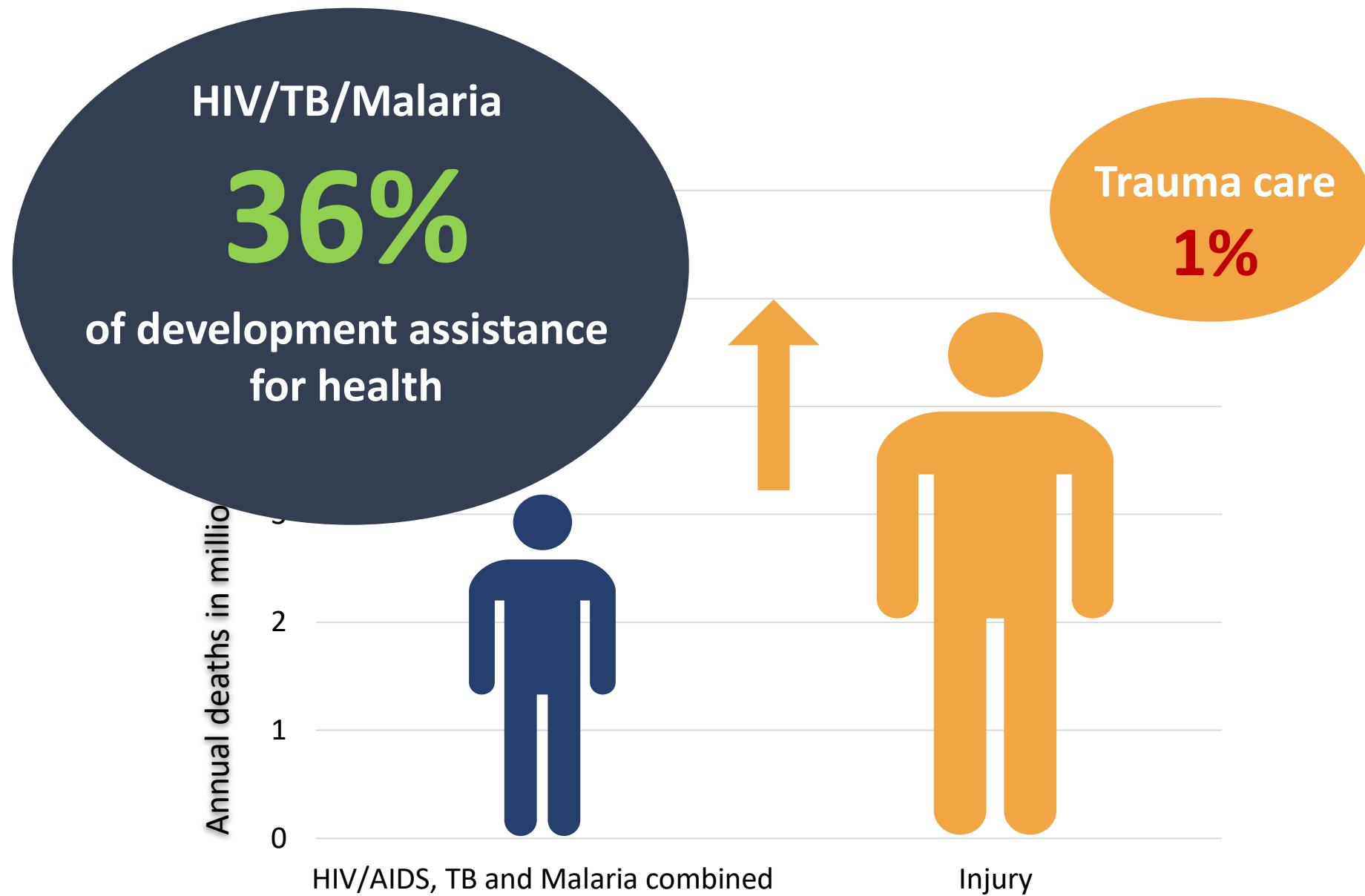
...by the numbers





Over **HALF** of deaths and a **THIRD** of disabilities in low- and middle-income countries are from conditions treatable by emergency care







A low-angle shot of a modern building at dusk. A prominent red 3D sign with the word 'EMERGENCY' in white capital letters is mounted on the facade. The building features a grid of windows reflecting the deep blue sky. Below the sign, a recessed area is illuminated with a warm yellow light. The overall composition is dynamic, with strong geometric lines and a high-contrast color palette.

EMERGENCY

Emergency Medicine

a field of practice based on the knowledge and skills required for the prevention, diagnosis and management of **acute and urgent aspects of illness and injury** affecting patients of **all age groups** with a full spectrum of **undifferentiated physical and behavioural disorders**



What is triage?

“to sort”



old system of triage

Medical

VS

Surgical / Casualty

old system of triage

Medical

VS

Surgical / Casualty





old system of triage

Medical

Surgical / Casualty



old system of triage

Medical

Surgical / Casualty



Today...

Emergency Department





Emergency Care





Emergency Care



An integrated platform for delivering accessible, quality, time-sensitive health care service for **acute illness and injury** across the life course

Care for all the people, all the time

LEVEL OF FACILITY	OLD NOMENCLATURE	RECOMMENDED NOMENCLATURE
National Referral Hospital	Casualty (Trauma) Medical Emergency (None trauma)	Emergency Department (to manage all emergencies across all age groups)
Specialised referral hospital		Emergency Department
Regional Referral Hospital		Emergency Department
General Hospital		Emergency Unit
Minor Trauma Unit		Emergency Unit

What is triage?

“to sort”

Prioritizes the order of evaluation & treatment
based on **severity of the condition**



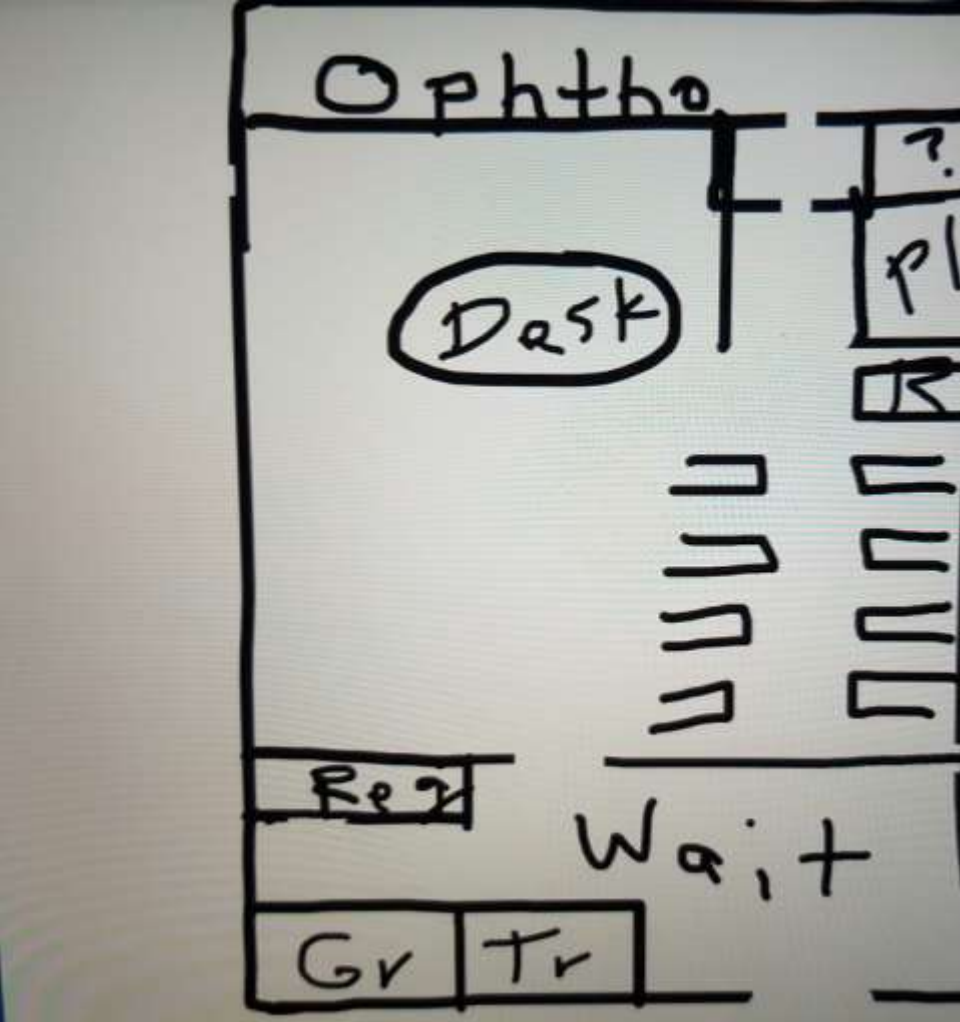


Resuscitation Bay

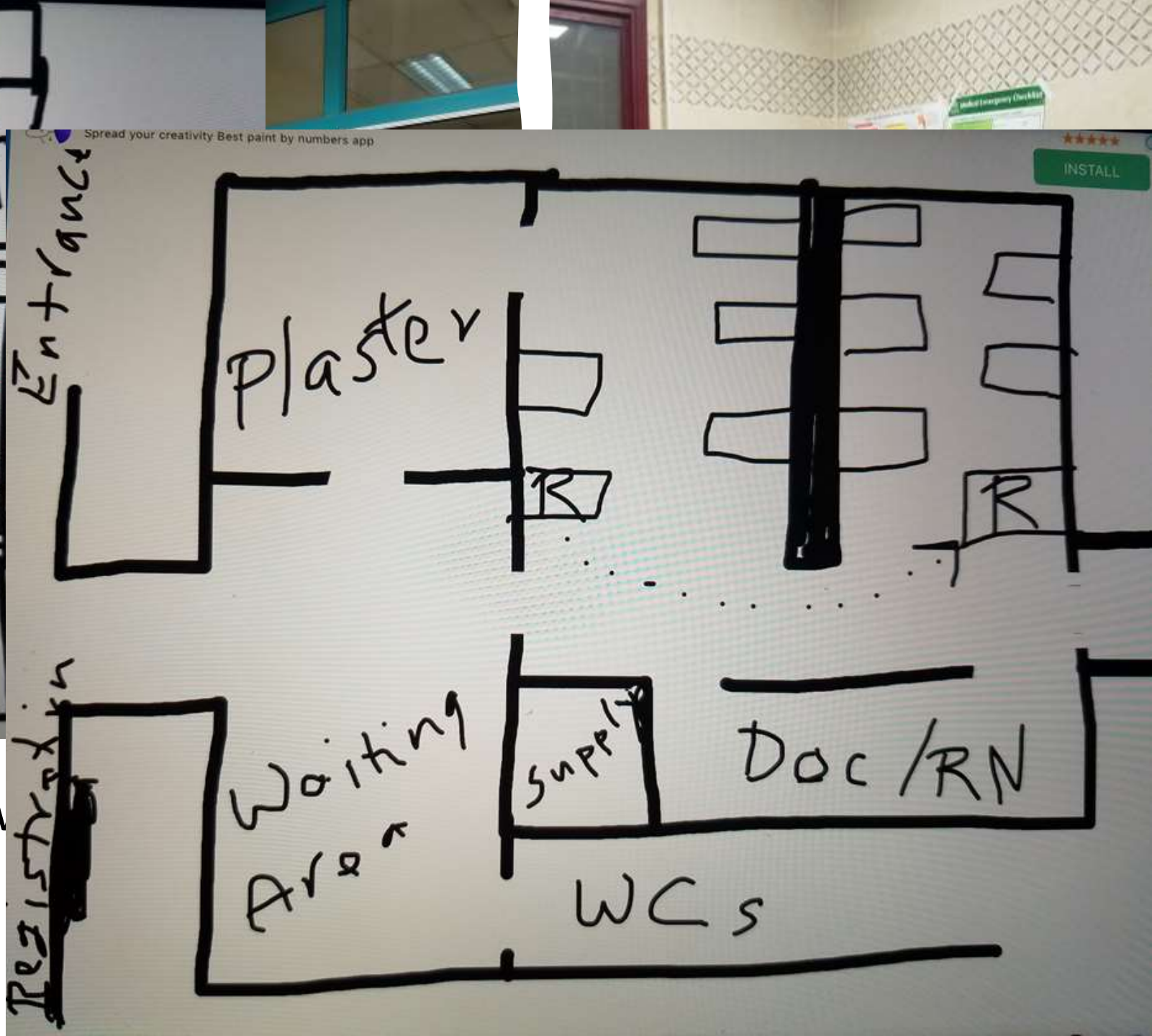


Palestine

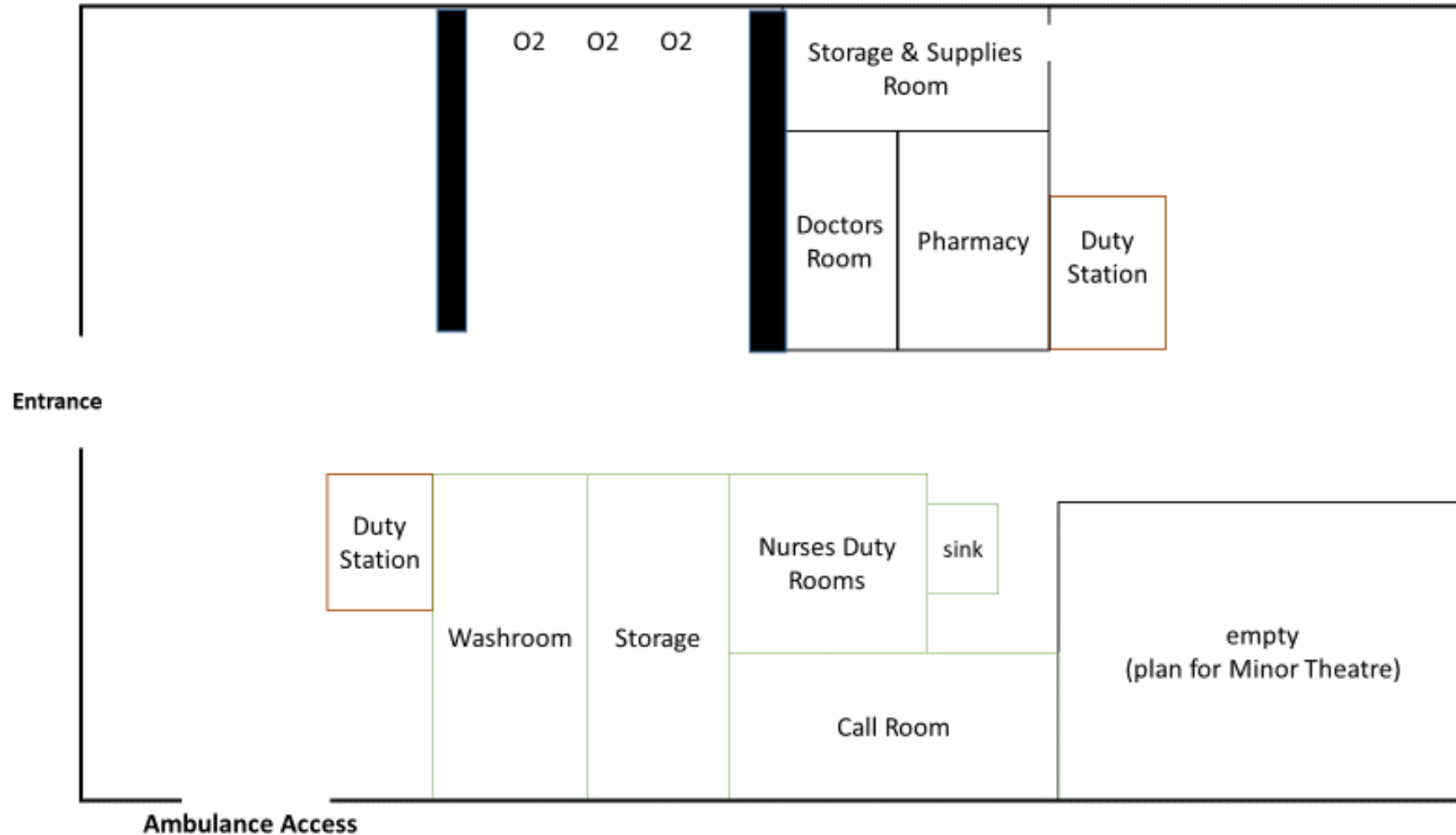
WHO Triage Tool and Medical/Trauma Checklists

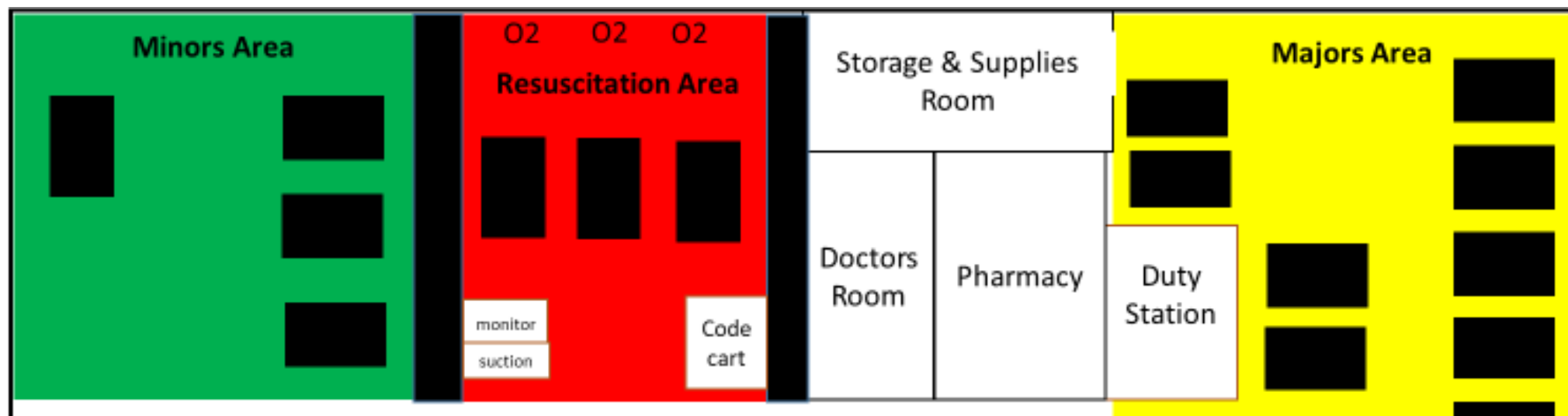


Palestine

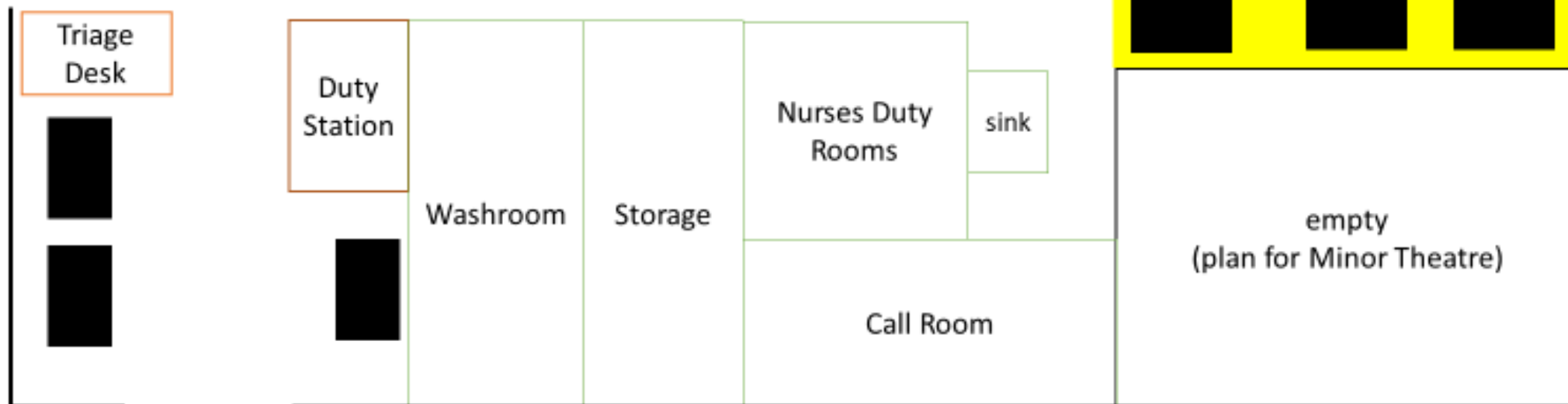


Kiriddu Emergency – March 2019





Entrance



Ambulance Access

Resus Bay

Accessible and separated from other care areas

Line of sight of care team

Privacy provided when possible



Resus Bay

Accessible and separated from other care areas

Line of sight of care team

Privacy provided when possible

Reliable oxygen supply

Code cart (essential meds and airway equipment)

Monitors, vital sign machines, suction



Resus Bay

Accessible and separated from other care areas

Line of sight of care team

Privacy provided when possible

Reliable oxygen supply

Code cart (essential meds and airway equipment)

Monitors, vital sign machines, suction

Audible alert when critical patient arrives

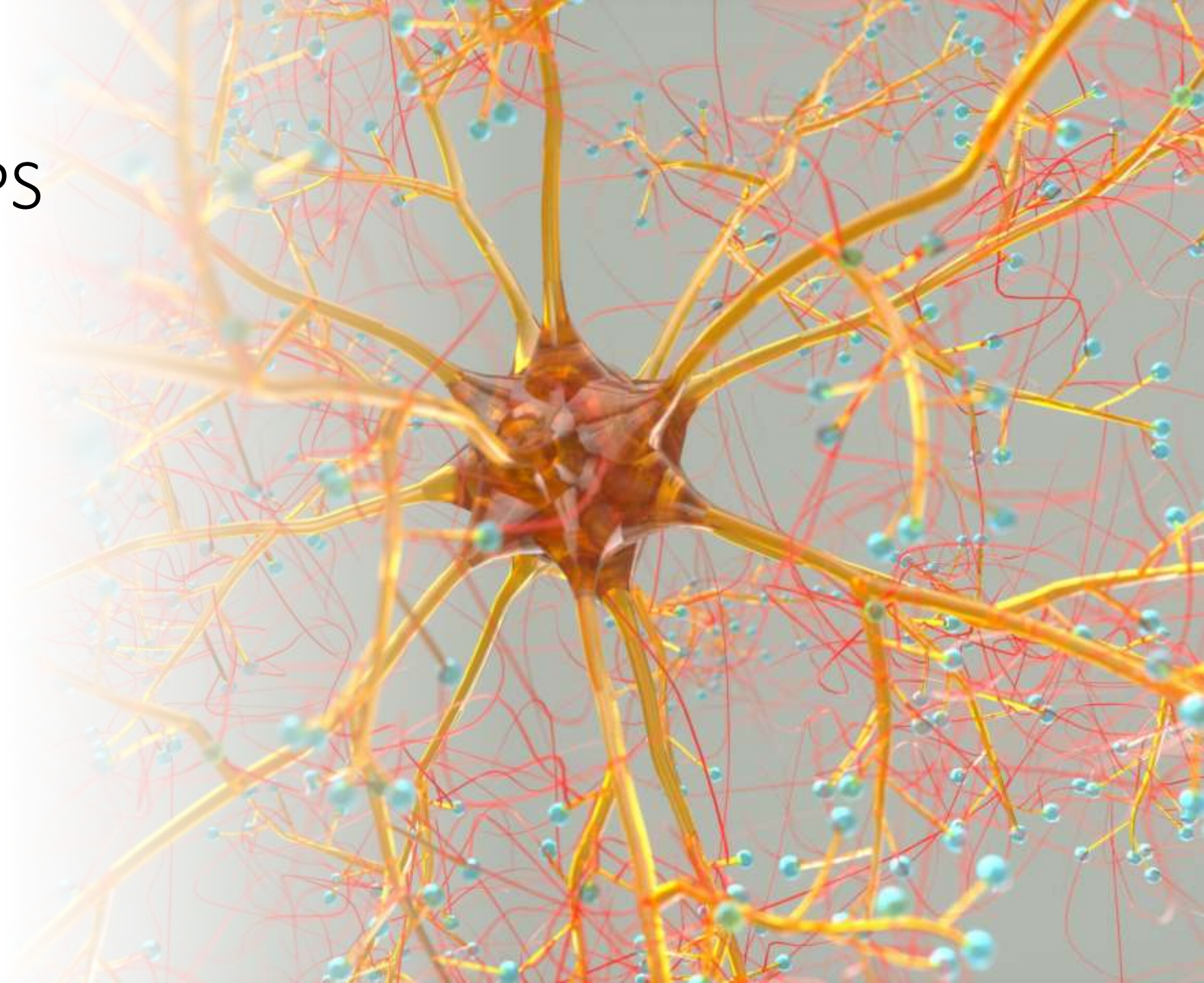
Immediate response to bedside

EMS/Family/Bystanders stay to give report



RELATIONSHIPS

- Internal
- External
- Functional



Internal RELATIONSHIPS

- Planning of workspaces – varied stations, easy flow, sufficient seating
- Consideration of security – visible presence is better than fancy equipment
- Break room – food preparation, relaxation, secure storage, staff toilets



Procedure / Plaster / Paediatric room



External RELATIONSHIPS

- Other hospital units
 - Radiology
 - Intensive Care
 - Transport
 - Security
 - Consult services
- EMS providers
- Police, Disaster response units



Functional RELATIONSHIPS

- Adequate space for patient families in waiting room and at bedside
- Clear signage in local language
 - Hospital policy – “service is free”
 - EU flow – triage, bed, doctor/nurse, etc
 - Toilets
- Outpatient services





Protocols



Protocols



- **Communications**
 - Routine
 - Security crisis – violence, infant theft
 - Hospital emergency – fire, structural damage
 - Disaster – natural, terrorist



Protocols

- Communications
 - Routine
 - Security crisis – violence, infant theft
 - Hospital emergency – fire, structural damage
 - Disaster – natural, terrorist
- **Mass Casualty**
 - **Plan to scale up space, providers, supplies**
 - **Coordinate with other institutions**

Protocols

- Communications
 - Routine
 - Security crisis – violence, infant theft
 - Hospital emergency – fire, structural damage
 - Disaster – natural, terrorist
- Mass Casualty
 - Plan to scale up space, providers, supplies
 - Coordinate with other institutions
- **Clinical**
 - **Trauma**
 - **Sentinel presentations – shortness of breath, chest pain, anaphylaxis, sepsis, etc.**
 - **Transfers – cardiac cath, Ob Gyn, neurosurgery, etc.**
 - **Unknown patients**

Resources



- MINISTRY OF HEALTH

- Health Management Information System

- Data collection tools
 - Patient report forms
 - Emergency Unit Register

- National Emergency Department Design Standards

- Soon!

- ALL OF US

- AND...

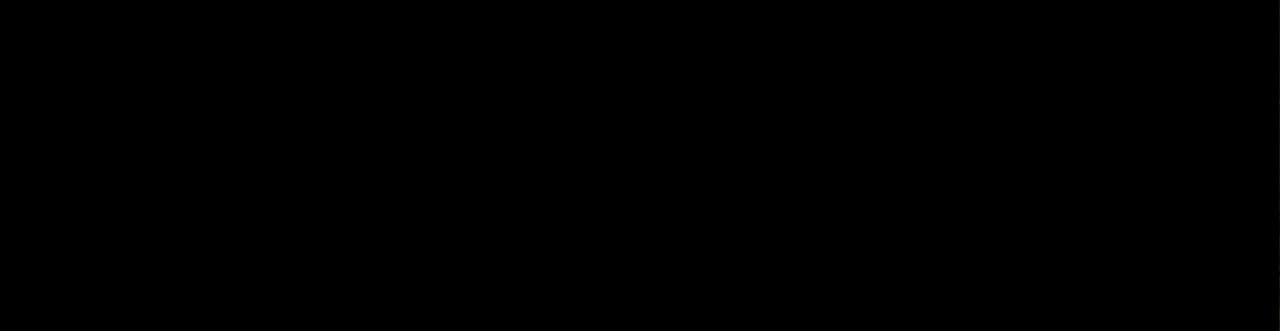
Future of EM

MUST and MAK
Emergency Medicine
residents













Standards of Emergency Care Uganda 2022



Mary Ellen Lyon, MD DTM&H
Educator, Seed Global Health
Makerere University
mlyon@seedglobalhealth.org

