

ED approach

Busingye Jacob

MUST/MRRH (Resident Doctor Year 2)

Goals

- Abd pain is a frequent nonspecific symptom with self limiting conditions like GE , constipation and viral illness to more life threatening conditions.
- So its important to identify child with serious cause of abdominal pain that will require specific intervention.
- Repeat exams and follow up is important goal too. As many can present to us with very nonspecific symptoms and signs

Causes of acute abdominal pain in children by age

Neonate	1 month to 2 years	2 to 5 years	>5 years
Adhesions*	Adhesions*	Adhesions*	Adhesions*
Necrotizing enterocolitis*	Foreign body ingestion*	Appendicitis*	Appendicitis*
Volvulus*	Hemolytic uremic syndrome*	Foreign body ingestion*	Diabetic ketoacidosis*
Colic¶	Hirschsprung disease*	Hemolytic uremic syndrome*	Hemolytic uremic syndrome*
Dietary protein allergy	Incarcerated hernia*	Intussusception*	Myocarditis, pericarditis*
Testicular torsion	Intussusception*	Primary bacterial peritonitis*	Perforated ulcer*
	Trauma (including inflicted injury)*	Trauma (including inflicted injury)*	Primary bacterial peritonitis*
	Gastroenteritis¶	Gastroenteritis¶	Trauma*
	Viral illness¶	Viral illness¶	Constipation¶
	Dietary protein allergy	Pharyngitis¶	Gastroenteritis¶
	Hepatitis	Constipation¶	Pharyngitis¶
	Inflammatory bowel disease	Henoch Schönlein purpura	Viral illness¶
	Meckel's diverticulum	Hepatitis	Abdominal migraine
	Sickle cell syndrome vasoocclusive crisis	Inflammatory bowel disease	Cholecystitis or cholelithiasis
	Toxin		Familial Mediterranean fever

History

Typical presentations and atypical presentations.

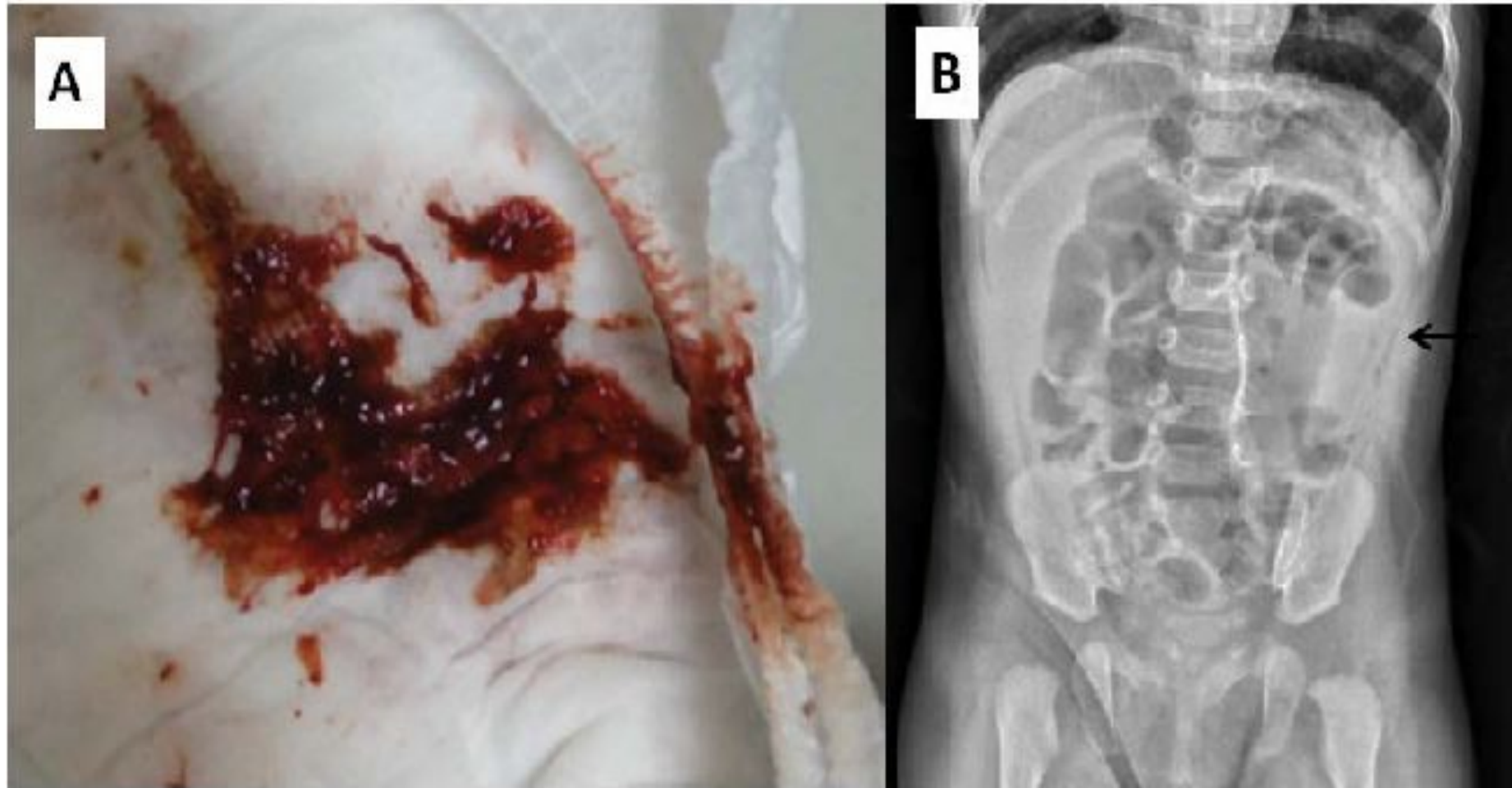
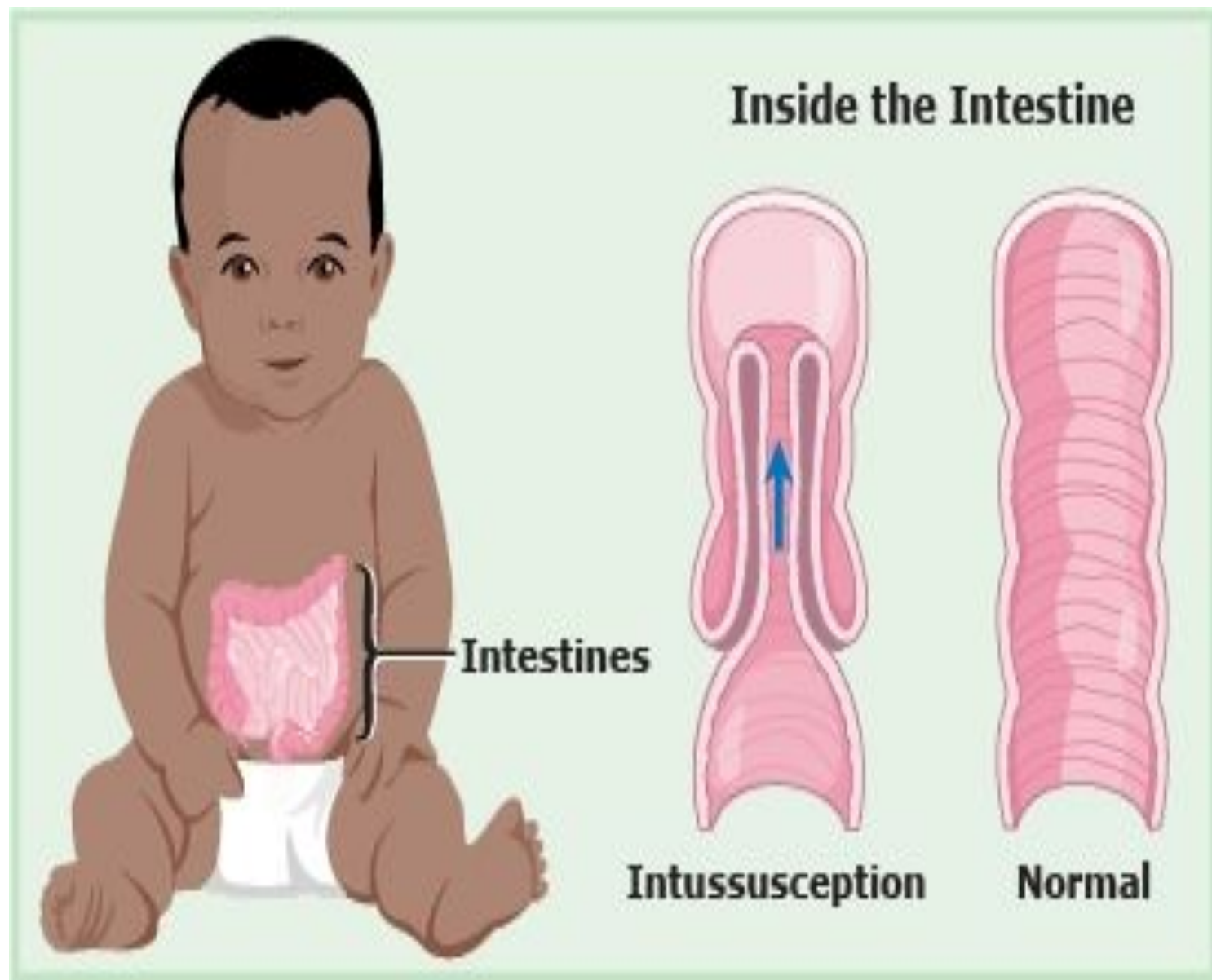


Figure 1: (A) Currant jelly stool was noted in diaper: (B) Abdominal

Physical Examination

- Primary Survey
- Secondary survey
- More focused examination for possible complications.





Investigations

- Bedside Investigations
- Laboratory tests (Importance ?)









Ddx

- Rectal Prolapse
- Volvulus
- Blunt abdominal trauma
- Testicular torsion
- Appendicitis