



Seed  
GLOBAL HEALTH



# PICK-UP AND TRANSPORTATION OF AN EBOLA PATIENT

**OKIROR ANDREW**  
**EMS SUB PILLAR**  
**EVD RESPONSE**

# OUTLINE

- Stake holders in the patient evacuation
- Considerations before,
- During and
- After transportation
- Decontamination
- Debrief

# STAKE HOLDERS IN PATIENT EVACUATION



**CAD**

Communication

Coordination

Dispatch

Cont'd.....



**COMUNITY**

**Collaborations**

**Information**

**Leadership**

Cont'd.....



EVACUATION  
TEAM

Evacuation

Care during transit

IPC during transit

Cont'd.....



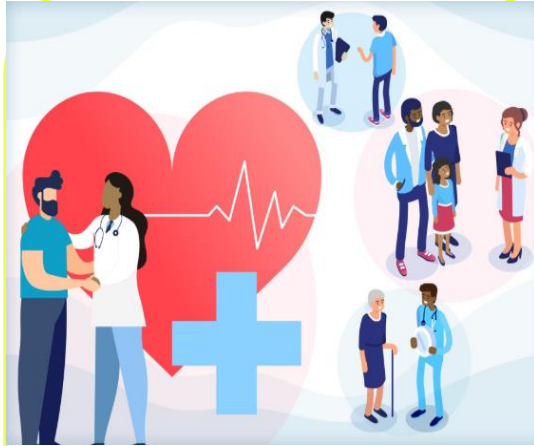
**ETU TEAM**

Receive

Clinical care

IPC. Decontamination

Cont'd.....



SUPPORT  
PILLARS

Surveillance

Case management

IPC.

Logistics **etc.....**

# Before transportation considerations

- Preparation Team; Driver and the team
- Evacuation information considerations
- Patient preparation; NOK
- Notifying the reception facility



Seed  
GLOBAL HEALTH





# During transportation

IPC IS KEY

Patient care

Handover to the definitive facility



Seed  
GLOBAL HEALTH



# After evacuation

## Decontamination & Disinfection

## Doffing

## Reporting back to the post



Seed  
GLOBAL HEALTH



# Debrief

Key Questions for quality improvement

Run through the case

1. What went well
2. What did not go well
3. What we need to improve



Seed  
GLOBAL HEALTH





Thank you